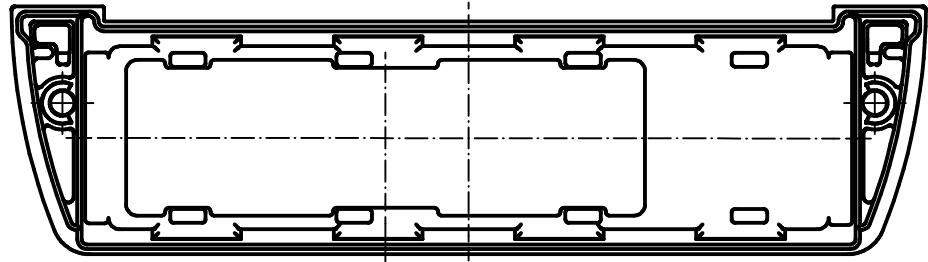
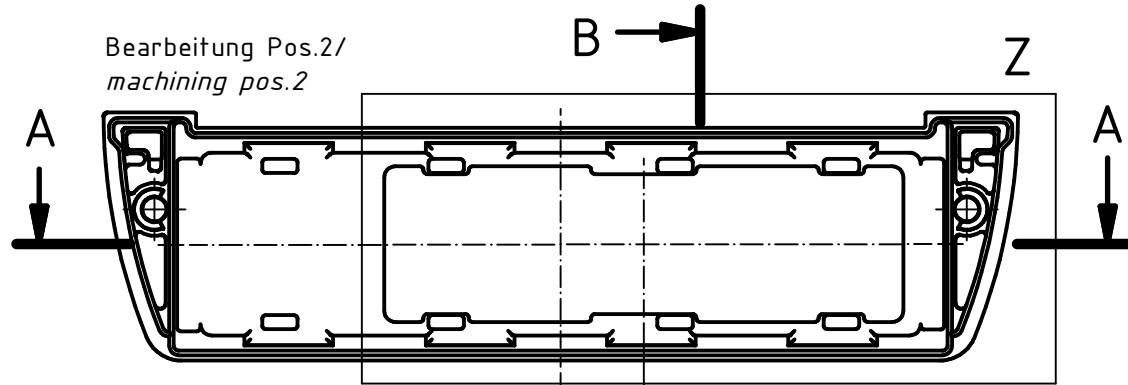


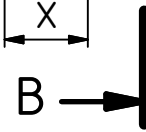
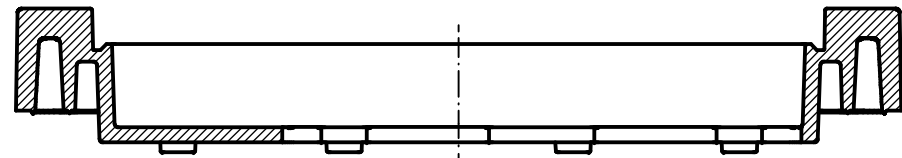
Bearbeitung Pos.1/  
machining pos.1



Bearbeitung Pos.2/  
machining pos.2

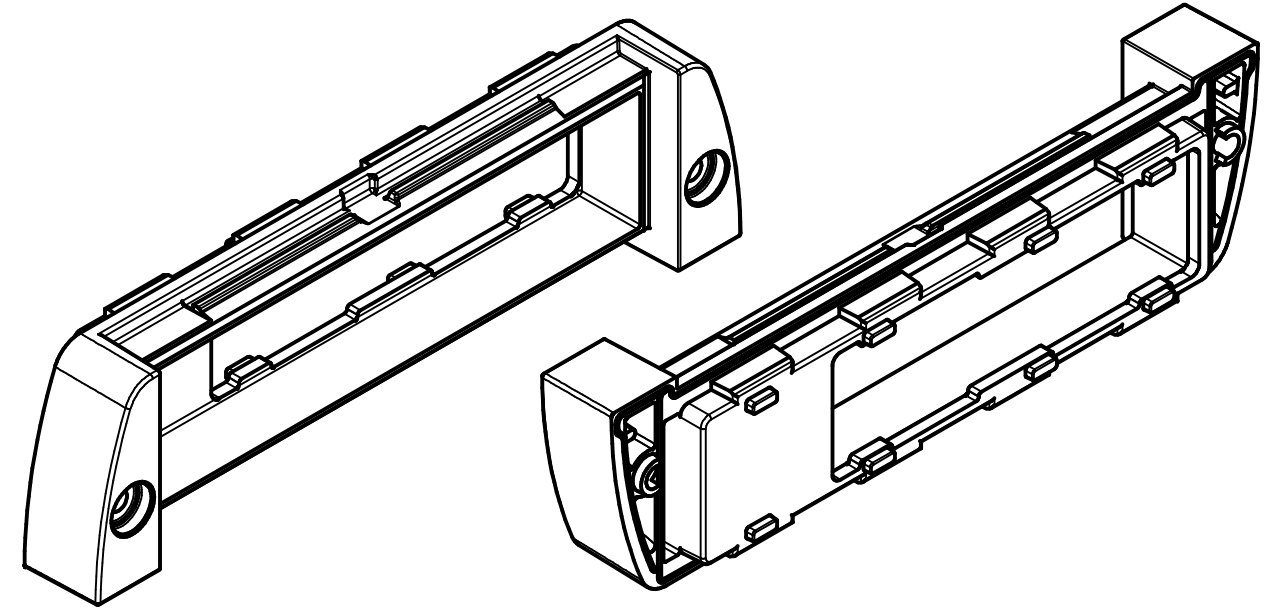
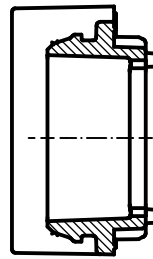


A-A



gezeichnet ASM 1230 Batteriefachausschnitt in Pos. 2  
ASM 1230 battery compartment cut-out drawn in pos. 2

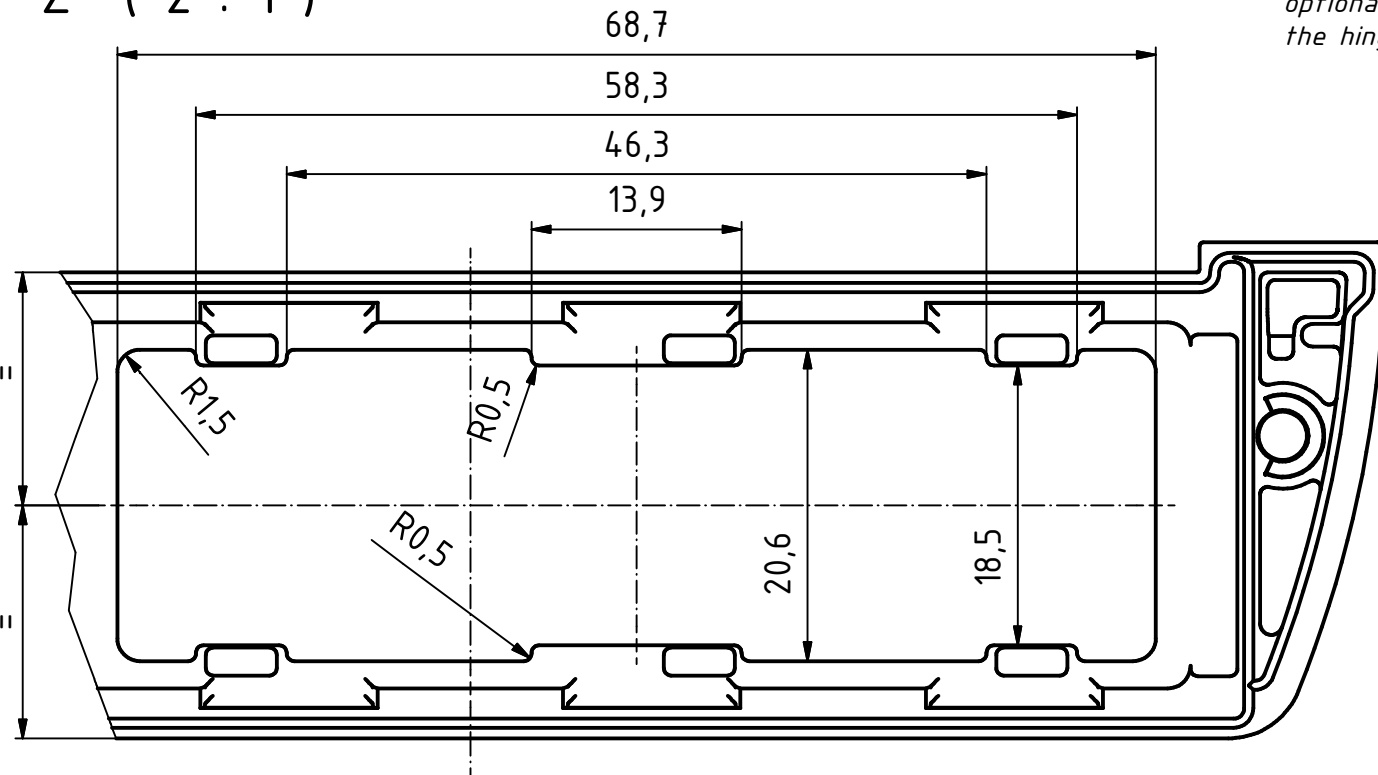
B-B



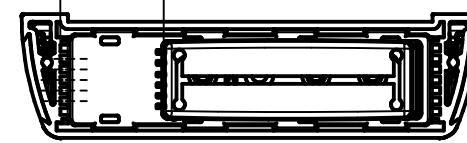
Modell/model	X	Y
ASM 1030 BE-4MN Pos1	0	-
ASM 1230 BE-4MN Pos1	11	27,2
ASM 1230 BE-4MN Pos2	11	27,2

Das Batteriefach wird von "unten" mit der Scharnierseite zuerst in den Ausschnitt eingesetzt.  
Die Scharnierposition des Batteriefaches kann beim ASM 1230 optional "nach Außen" oder "zur Mitte" gewählt werden. Beim ASM 1030 befindet sich die Scharnierseite aufgrund der Symmetrie immer Außen./  
*The battery compartment is inserted from "downside" with the hinge side first into the cutout. The hinge position of the battery compartment can be selected with the ASM 1230 optionally "outward" or "to the center". With the ASM 1030 the hinge side is due to the symmetry always outside.*

Z ( 2 : 1 )



Platinenbreite/  
width of plate  
max. Y

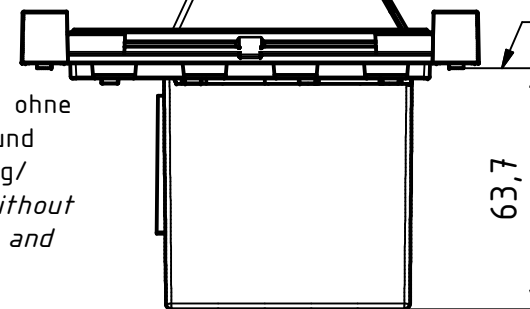


zur Mitte/  
to the center

nach Außen/  
outwards

Profilende/  
profile end

Ansicht ohne  
Profil und  
Dichtung/  
view without  
profile and  
seal



Maßstab/  
Scale: 1:1 (2:1; 1:2)

Zeichnungs-Nr. / Drawing-No.:  
3K 5365.197.01

Artikel / Article:  
AluStyle  
ASM ... -BE-4MN  
Katalogzeichnung/Catalogue drawing

Ä.Nr/  
Alt.No.:  
Datum/  
Date:  
DISK: 2803015.idw  
Datum/Date: 15.12.2008 HR

