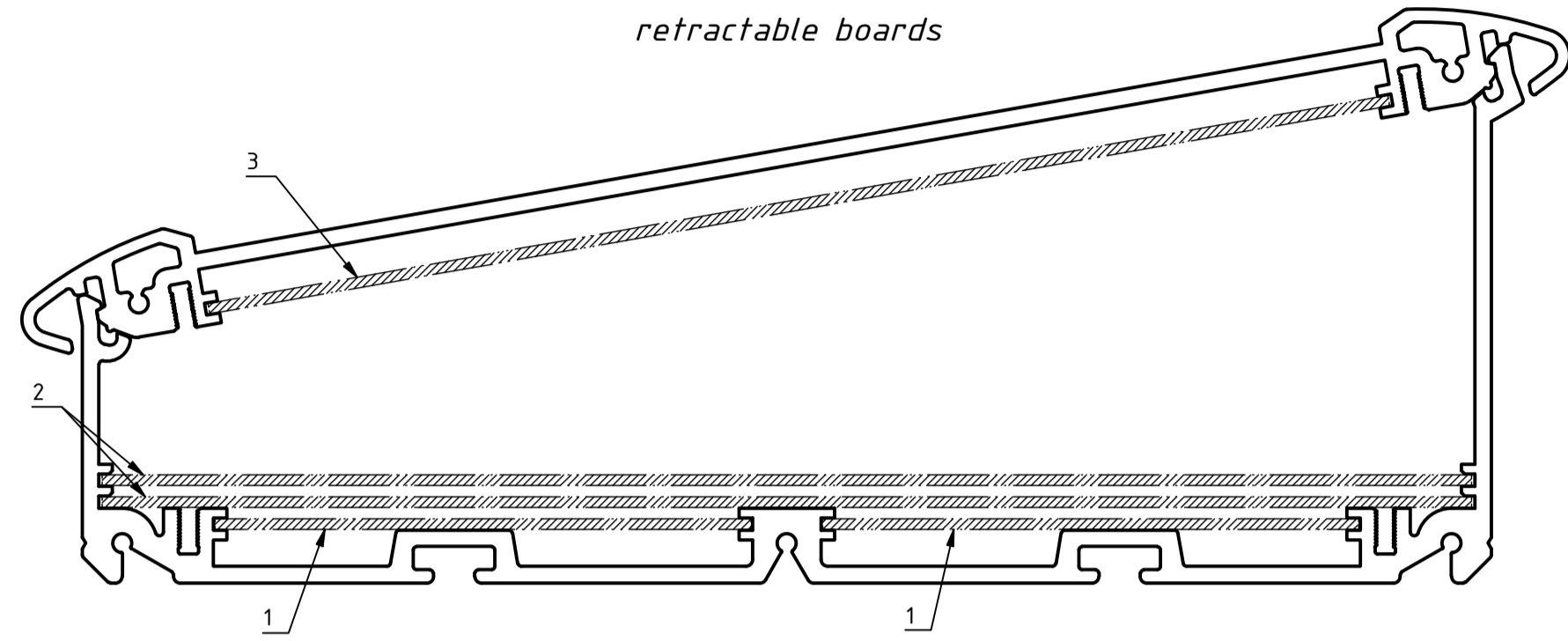


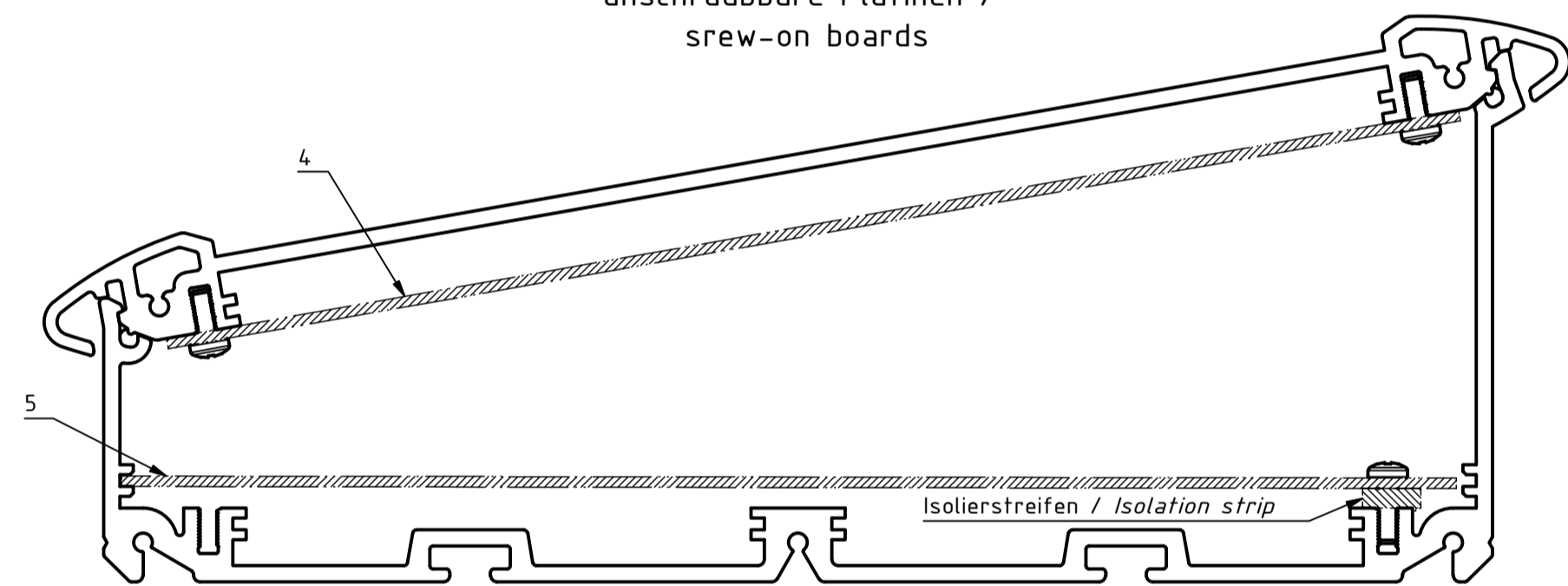
**Alu-Topline-IP 2385**

einschiebbare Platinen /  
retractable boards



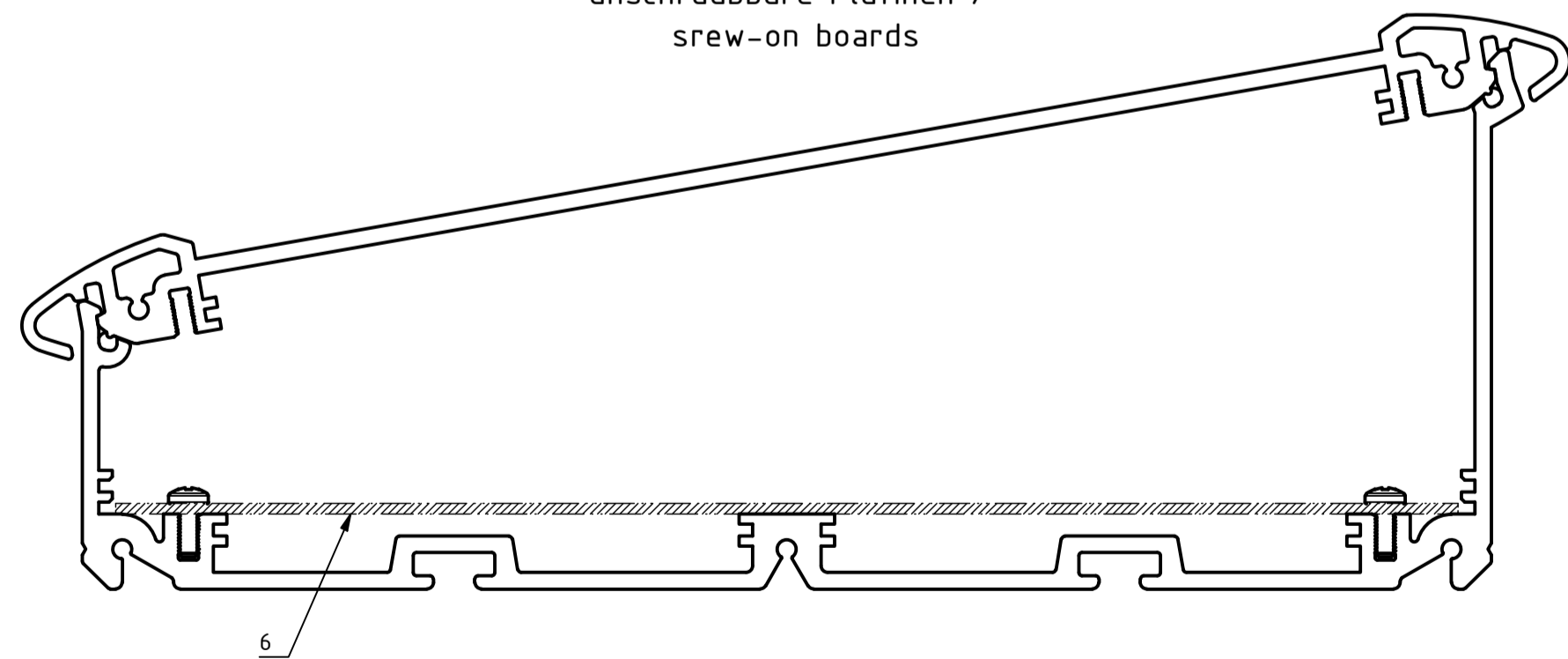
**Alu-Topline-IP 2385**

anschraubbare Platinen /  
screw-on boards



**Alu-Topline-IP 2385**

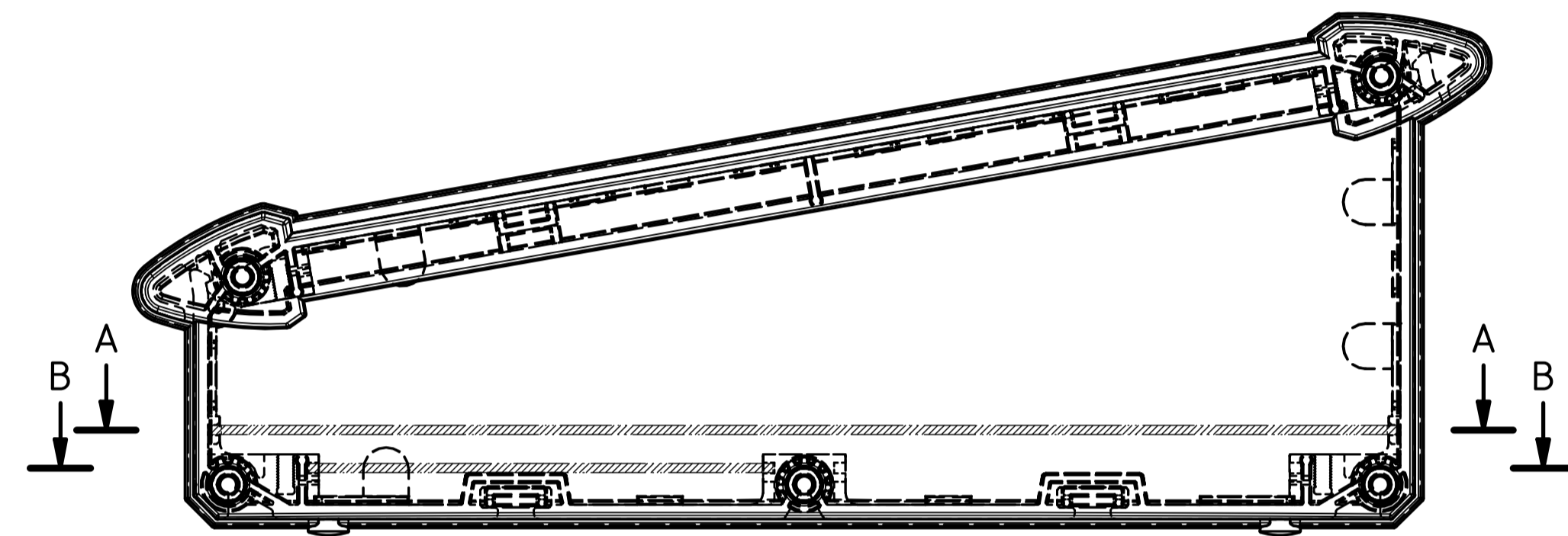
anschraubbare Platinen /  
screw-on boards



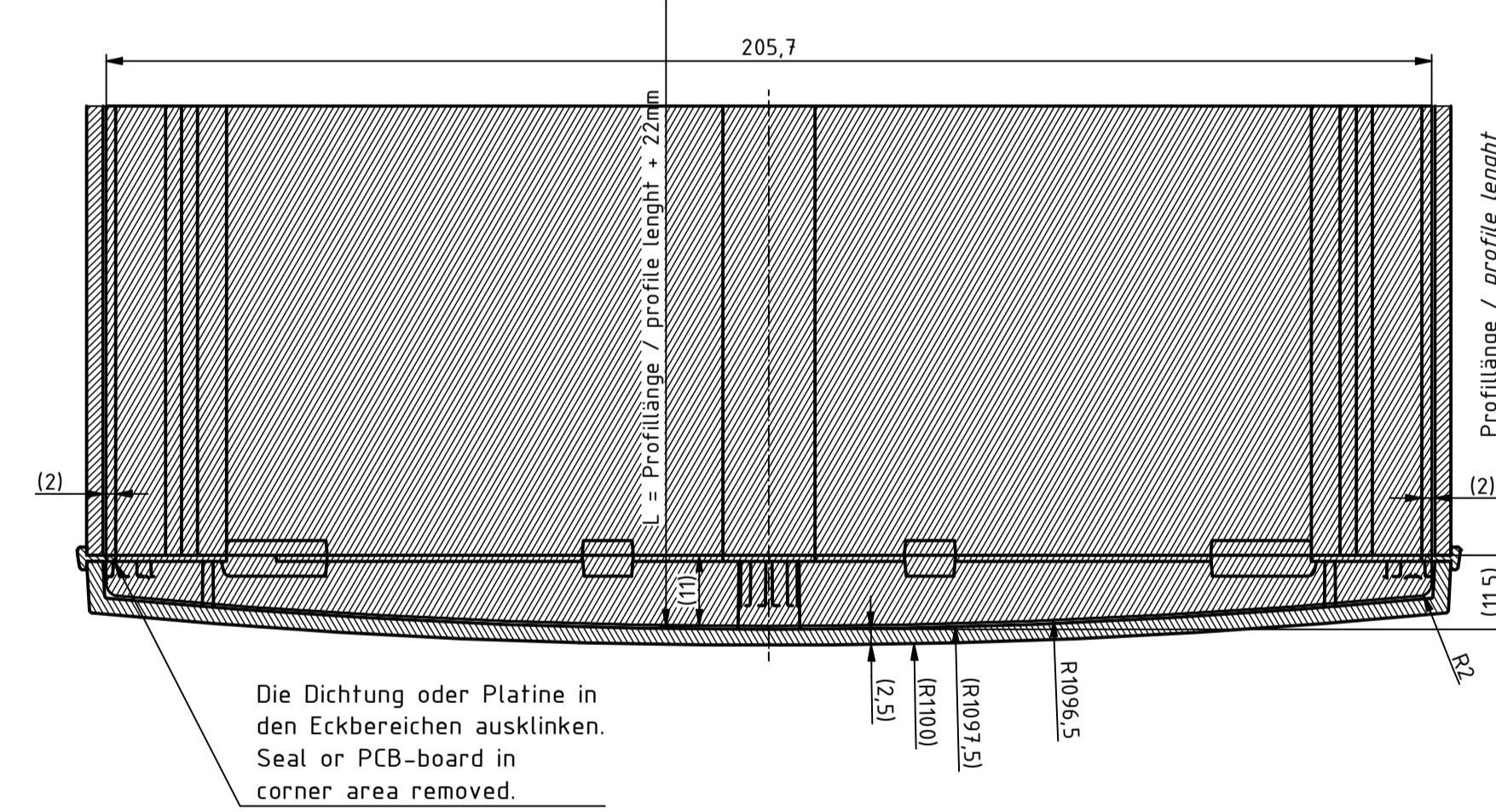
**Platinenabmessungen / PCB dimensions**

Platine / board	L	B	H	Montageart / mounting type
Platine / board 1	Profillänge / profile length - 0,5mm	80,5	1,6	Einschiebbar / retractable
Platine / board 2	Profillänge / profile length - 0,5mm	205,7	1,6	Einschiebbar / retractable
Platine / board 3	Profillänge / profile length - 0,5mm	180	1,6	Einschiebbar / retractable
Platine / board 4	Profillänge / profile length - 0,5mm	200	1,6	Anschrauben / screw on
Platine / board 5	Profillänge / profile length - 0,5mm	203,5	1,6	Anschraubbar mit Isolierstreifen / screw on with isolating strip
Platine / board 6	Profillänge / profile length - 0,5mm	201,7	1,6	Anschrauben / screw on

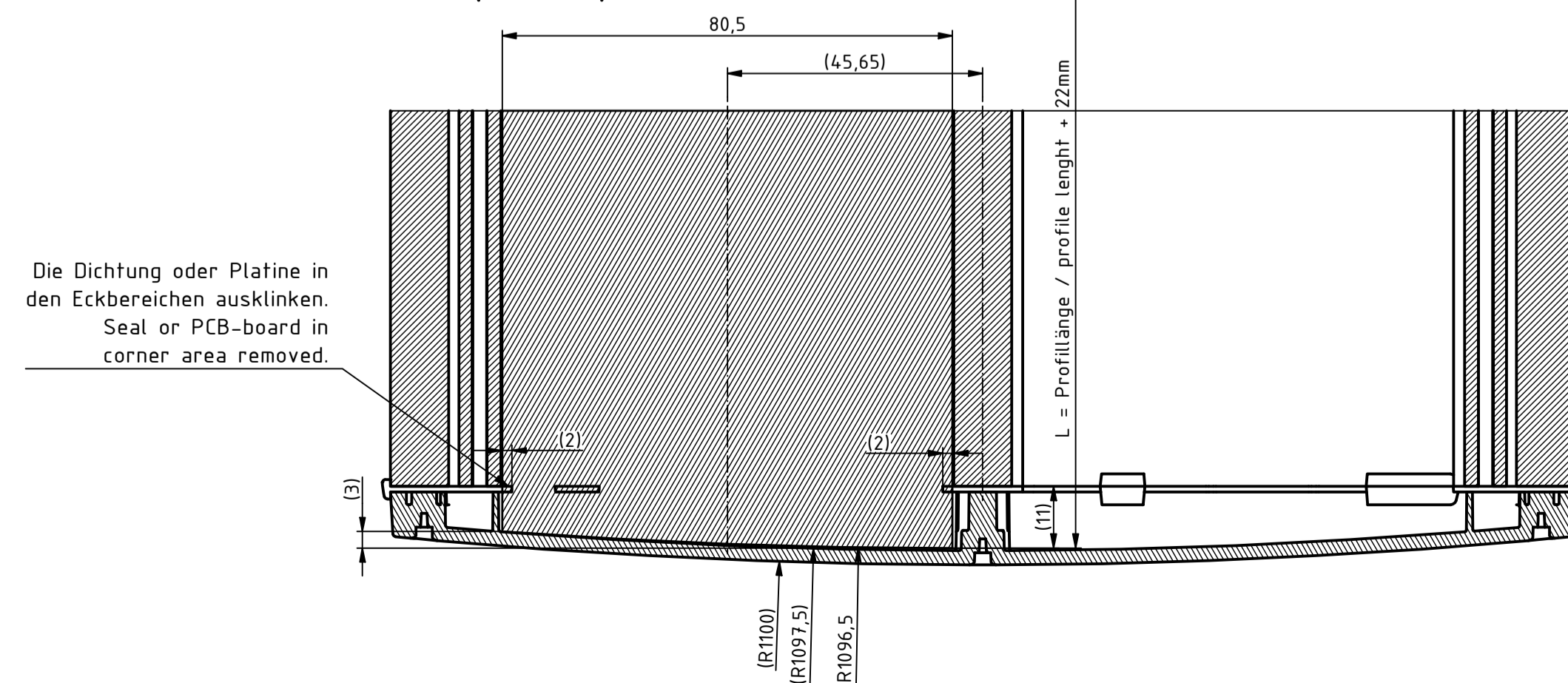
Maße für Platinen, die seitlich in die runden Kunststoffdeckel hineinragen.  
Dimensions for boards, which goes sideways into roundet plastic-lids.



**A-A ( 1 : 1 )**



**B-B ( 1 : 1 )**



Maßstab / Scale: 1:1

Zeichnungs-Nr. / Drawing-No.: 1K 5360.130.01

Artikel / Article: Alu-Topline-IP 2385  
Platinenmontage/PCB mounting  
Katalogzeichnung/Catalogue drawing

A Nr. / Alt. No. Datum / Date:

DISK: 2804528.idw  
Datum / Date: 02.09.2021 JL



A Phoenix Mecano Company